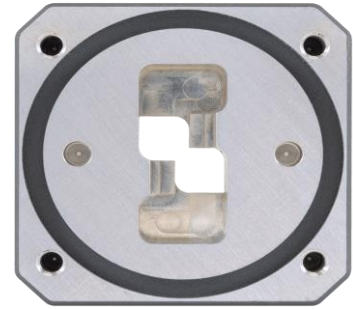
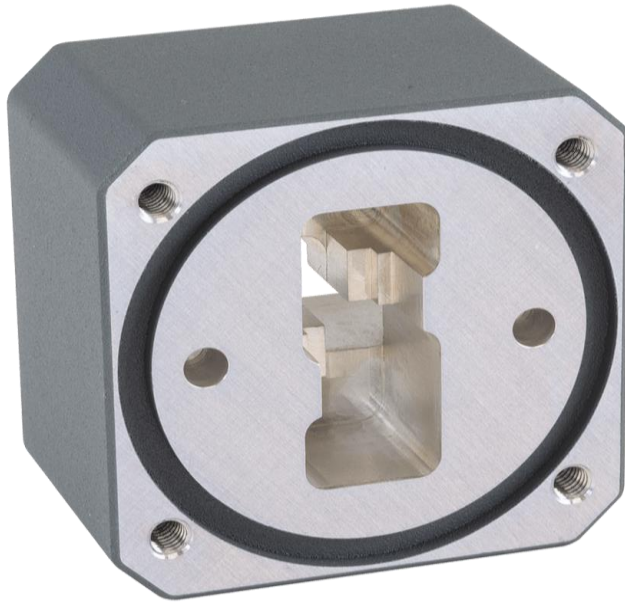
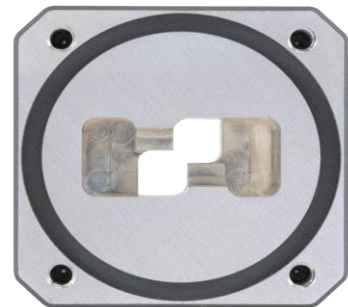


Product Specification



Front View



Rear View



Product in use

Part Number:

ST16YY-90-P-*

* = see options below

Description / Mechanical Specifications

Product Type:	Waveguide Twist (Super-Twist)
Waveguide Size:	WG16 / WR90 / R100
Flange 1:	16Y (UG Cover + Groove)
Flange 2:	16Y (UG Cover + Groove)
Twist Angle:	90°
Material / Finish:	Aluminium / Passivated
* Paint Finish:	G = Gray (RAL 7012), B = Black, W = White
Accessories:	None

Dimensions

Length:	28.6 mm	Hole Size:	8-32 UNC Thread
---------	---------	------------	-----------------

Electrical Specifications

Frequency Range:	8.20 - 12.4 GHz
Insertion Loss:	0.1 dB
Return Loss:	27.3 dB

Environmental Performance

Temperature Range:	-70 to +150°C
ETSI Class:	ETSI EN 300-019-2-4 Class 4.1
I.P. Rating:	IP65 (Weatherproof)